

The ENERGIN® GEN generator set produces electricity either parallel with the public network or with an isolated load. As an option, automatic emergency operation and/or island-parallel operation with other generators is possible.

The unit is supplied as a compact, fully functional unit, with or without a sound attenuating enclosure. The engine, generator, and the control and power panel are mounted, ready for operation on the vibration-decoupled base frame. A lubrication oil system, which allows operation of up to 2000 hours without manual lube oil refilling, is integrated on the unit.

The electrical control system provides protection and control functions for automatic or manual operation. A 12" touch panel informs about operating conditions and allows the operation and parameterization of the system. Various interfaces are available for communication with other power generators and an overhead control system. An Ethernet interface allows connection to the Internet for remote monitoring and remote maintenance.

The entire system is certified according to the BDEW medium voltage directive (Grid code).

TECHNICAL DATA

Manufacturer	R Schmitt Enertec	
ENERGIN® Type	M06 GEN B200	
Electrical power ¹	kW	200
Gas consumption ² (LHV)	kW	479
Self consumption ³	kW	3,6

DESIGN

Fuel type	Biogas	
Lower heating value LHV	kWh/Nm ³	5,0
Gas flow pressure ⁴	kPa	2,2 - 5,0
Inlet air temperature	°C	20
Exhaust temperature	°C	488

EXHAUST EMISSIONS⁵ WITHOUT CATALYST

NO _x ⁶	mg/Nm ³	500
CO	mg/Nm ³	1000
Formaldehyde	mg/Nm ³	100

ENGINE

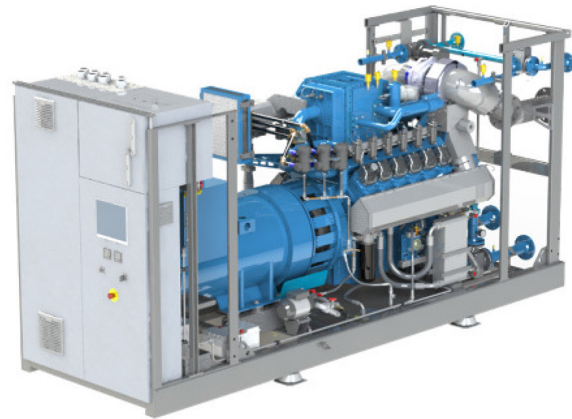
Manufacturer	R Schmitt Enertec	
ENERGIN® Type	M06-BTID41	
Working principle	4-stroke	
Cylinder configuration	6 in V / 90°	
Valves per cylinder	4	
Aspiration	turbocharged	
Mixture cooling	internal	
Displacement	ltr	11,3

LUBE OIL

Lube oil volume	ltr	255
Consumption	ltr/OH	0,06

ALTERNATOR

Manufacturer	Leroy Somer	
Type	LSA 46.3 L11	
Voltage	V / Hz	400 / 50
Speed	1/min	1.500
Efficiency	%	95,8



PERFORMANCE⁷

Load		100 %	75 %	50 %
Electrical power	kW	200	150	100
Fuel consumption	kW	479	367	263
Gas flow at LHV	Nm ³ /h	96	74	53
Electrical efficiency	%	41,8	40,9	38,0
Exhaust gas flow ⁸	m ³ /h	1.939	1.480	1.053
Air requirement	m ³ /h	5.121	4.213	3.520
Exhaust air ⁹	m ³ /h	4.374	3.663	3.142

DIMENSIONS AND WEIGHTS WITH SOUND ENCLOSURE

Length	mm	3.200
Height	mm	2.250
Height with 90° elbow	mm	3.250
Width	mm	1.340
Dry weight	kg	3.310
Operational weight	kg	3.570

CONNECTIONS

Exhaust	DN / PN	150 / 10
Fuel gas	DN / PN	50 / 16
Cooling water HT	DN / PN	65 / 16

Cleantech Solutions Sdn Bhd