

The ENERGIN® GEN generator set produces electricity either parallel with the public network or load. As an option, automatic emergency operation and/or island-parallel operation with other generators is possible.

The unit is supplied as a compact, fully functional unit, with or without a sound attenuating enclosure. The engine, generator, and the control and power panel are mounted, ready for operation on the vibration-decoupled base frame. A lubrication oil system, which allows operation of up to 2000 hours without manual lube oil refilling, is integrated on the unit.

The electrical control system provides protection and control functions for automatic or manual operation. A 12" touch panel informs about operating conditions and allows the operation and parameterization of the system. Various interfaces are available for communication with other power generators and an overhead control system. An Ethernet interface allows connection to the Internet for remote monitoring and remote maintenance.

The entire system is certified according to the BDEW medium voltage directive (Grid code).

TECHNICAL DATA

Manufacturer		R Schmitt Enertec
ENERGIN® Type		M12 GEN B400
Electrical power ¹	kW	400
Gas consumption ² (LHV)	kW	955
Self consumption ³	kW	9,1

DESIGN

Fuel type		Biogas
Lower heating value LHV	kWh/Nm ³	5,0
Gas flow pressure ⁴	kPa	3,5 - 5,0
Inlet air temperature	°C	20
Exhaust temperature	°C	488

EXHAUST EMISSIONS⁵ WITHOUT CATALYST

NO _x ⁶	mg/Nm ³	500
CO	mg/Nm ³	1000
Formaldehyde	mg/Nm ³	100

ENGINE

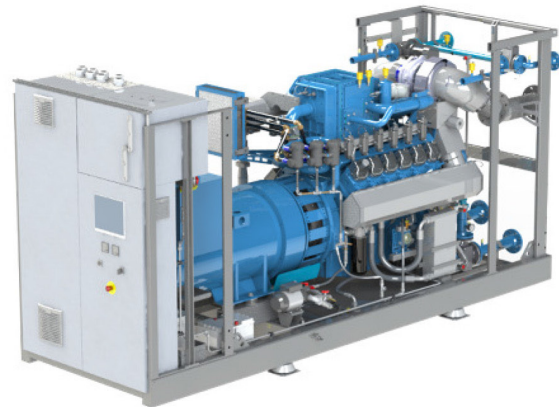
Manufacturer		R Schmitt Enertec
ENERGIN® Type		M12-BTID41
Working principle		4-stroke
Cylinder configuration		12 in V / 90°
Valves per cylinder		4
Aspiration		turbocharged
Mixture cooling		internal
Displacement	ltr	22,6

LUBE OIL

Lube oil volume	ltr	205
Make up tank volume	ltr	170
Consumption	ltr/OH	0,13

ALTERNATOR

Manufacturer		Leroy Somer
Type		LSA 47.2 M8
Voltage	V / Hz	400 / 50
Speed	1/min	1.500
Efficiency	%	96,2



PERFORMANCE⁷

Load		100 %	75 %	50 %
Electrical power	kW	400	300	200
Fuel consumption	kW	955	732	524
Gas flow at LHV	Nm ³ /h	192	147	105
Electrical efficiency	%	41,9	41,0	38,2
Exhaust gas flow ⁸	m ³ /h	3.863	2.948	2.096
Air requirement	m ³ /h	9.661	7.687	6.052
Exhaust air ⁹	m ³ /h	8.176	6.593	5.300

DIMENSIONS AND WEIGHTS WITH SOUND ENCLOSURE

Length	mm	4.380
Height	mm	2.030
Height with 90° elbow	mm	3.190
Width	mm	1.440
Dry weight	kg	4.810
Operational weight	kg	5.180

CONNECTIONS

Exhaust	DN / PN	150 / 10
Fuel gas	DN / PN	65 / 16
Cooling water HT	DN / PN	65 / 16

Cleantech Solutions Sdn Bhd